

## FRP STRAIGHT CROSS ARMS (REC Design)

### RANGE & SPECIFICATIONS:

11 KV Cross Arm.

11 KV Top Hamper

33 KV Cross Arm

33 KV Top Hamper

Note: Conforms to REC specification

No. 40 Rev. 97 for 11 KV

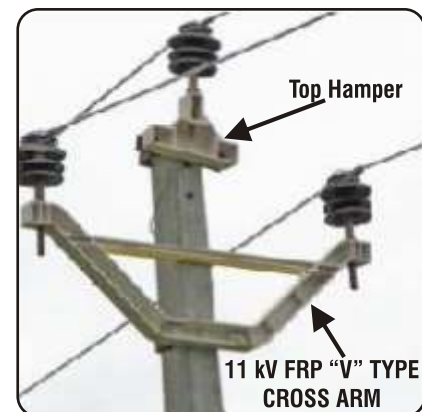
NO. 42 Rev. 97 for 33 KV

**Unique Features :** Insulating and hence no birdage problem • Light weight yet strong • Special Polymeric reinforcement provided for hardware as per REC specifications • Anti corrosive • Ideal for all types of weather conditions • Made from advanced composite of plastics • Safe for the working personnel



## FRP 'V' TYPE CROSS ARMS

**Unique Features :** • Anti-corrosive - suitable for coastal and polluted atmosphere. Ideal for Harsh Weather Conditions • No change in conductor formation /configuration as well as ground clearance while replacing metal "V" type Cross Arms of existing lines • Maintenance Free - No painting, saving of recurring cost and labours • Suitable for 11 kV overhead line • Lightweight yet strong • Safe for the working personnel • Reduced Transportation cost and Ease of Erection • Insulating - Flashing of Insulators minimized • Earthing of pins can be dispensed • Made from advanced plastics composite Confirming to IS



### RANGE & SPECIFICATIONS:

Product Code	Description	Application
GSXA-011-01	V Type Cross Arm	11 KV Lines 3Ø/1Ø Composite & 1Ø (Ph-N)
GSTH-011-01	Top Hamper	/(Ph-Ph) type with or without Earthwire

\*Custom sizes also available as per customer requirements

NOTE : FLAT Type FRP Cross Arms of 11KV & 33KV as per REC Specifications and of 2' & 4' length with various Pin configurations are also available



## FRP 'V' TYPE CROSS ARMS

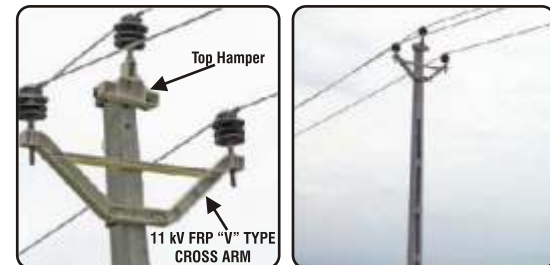
### RANGE & SPECIFICATIONS:

Product Code	Description	Application
GSXA-011-01	V Type Cross Arm	11 KV Lines 3Ø/1Ø Composite & 1Ø (Ph-N)
GSTH-011-01	Top Hamper	/(Ph-Ph) type with or without Earthwire

\*Custom sizes also available as per customer requirements

NOTE : FLAT Type FRP Cross Arms of 11KV & 33KV as per REC Specifications and of 2' & 4' length with various Pin configurations are also available

**Unique Features :** • Anti-corrosive - suitable for coastal and polluted atmosphere. Ideal for Harsh Weather Conditions • No change in conductor formation /configuration as well as ground clearance while replacing metal "V" type Cross Arms of existing lines • Maintenance Free - No painting, saving of recurring cost and labours • Suitable for 11 kV overhead line • Lightweight yet strong • Safe for the working personnel • Reduced Transportation cost and Ease of Erection • Insulating - Flashing of Insulators minimized • Earthing of pins can be dispensed • Made from advanced plastics composite Confirming to IS



## COMPOSITE INSULATORS

### RANGE & SPECIFICATIONS:

Sr. no.	Product Code	System Voltage kV(rms)	Rated Mechanical Load kN(min)
1.	GP-INS-11-45	11	45
2.	GP-INS-33-45	33	45
3.	GP-INS-33-70	33	70
4.	GP-INS-66-90	66	90
5.	GP-INS-66-120	66	120
6.	GP-INS-110-90	110	90
7.	GP-INS-110-120	110	120
8.	GP-INS-132-90	132	90
9.	GP-INS-132-120	132	120
10.	GP-INS-220-90	220	90
11.	GP-INS-220-120	220	120

**Unique Features:** • No Gap between sheath & fitting • Results in permanent protection of rod against pollution & moisture • Seamless Sheath & Weather shades • Core made out of Pultruded glass fibre reinforced epoxy resin rod • Metal End Fittings attached to the rod by crimping on automatic crimping machine.



## FRP CABLE TRAYS

### RANGE & SPECIFICATIONS:

Cable trays are used to support power cables & control cables for indoor and outdoor applications.

G.I./M.S. cable trays erode, corrode and spread heat, thus lead to power interruptions. Sintex FRP Cable Trays are safe, durable and cost effective for routing & supporting cables. Manufactured as per NEMA/ BIS/ Consultants' specifications, Sintex FRP Cable Trays are available in the following types: -

**Ladder type FRP Cable Trays:**

Two longitudinal side rails connected by rungs at regular interval.

**Through type FRP Cable Trays:**

Structures with a solid or perforated bottom with integrated or separate longitudinal side rails.

**Channel type FRP Cable Trays:**

Structures with a solid or perforated bottom with integral side rails.

**Unique Features:** • Excellent weatherability-UV stabilized • Fire retardant • Non-magnetic • No corrosion, no chemical erosion • Maintenance-free • Light weight • High load bearing capacity • Easy to install • Suitable for horizontal, vertical layout



## FRP CABLE TRAYS FOR BTS SHELTERS

### RANGE & SPECIFICATIONS:

- Standard modular designs to suit current BTS Shelter with cable tray width of 250, 300, 400, 450, & 500 mm
- Customised solution with different sizes and configuration in modular design to suit various requirements available against enquiry

**Unique Features:** • Modular design - easy to install on site and to relocate • Light weight yet strong • Anti-corrosive - no problem of condensation led corrosion • Maintenance free • Specially designed for prevention of damage to cables during laying or pulling • All components used including H/W are of non-magnetic type • EMI-transparent for perfect working of equipments inside the shelter



## SMC CHEQUERED PLATES

### RANGE & SPECIFICATIONS:

Rating of Equipment	Recommended Thickness of Sintex SMC Chequered Plates
3.3 KV Equipment	2.5 mm
6.6 KV Equipment	2.5 mm
11.0 KV Equipment	2.5 mm
22.0 KV Equipment	2.5 mm
33.0 KV Equipment	5.0 mm
66.0 KV Equipment	5.0 mm
EHT Switch Yard	10.0 mm

**Unique Features:** • Durable and resistant to decay • Maintenance-free • High dielectric strength • High life expectancy • Light weight, yet strong • Anti-corrosive • Can withstand the load of breaker trolleys without obstructing their movement • Tested as per IS



## SMC TRENCH COVERS & GRATINGS

### RANGE & SPECIFICATIONS:

<b>Length</b>	: 1 Metre
<b>Width</b>	: 0.3, 0.45, 0.6, 0.75, 0.9, 1, 1.2 metre respectively or as per order.
<b>Colour</b>	: Grey  (Sintex Trench Covers & Gratings are also supplied prefabricated with reinforcements of MS sections or FRP Pultruded sections to meet specific load applications)

**Unique Features:** • Light weight, yet strong • Durable and resistant to decay • Anti-corrosive • Resistant to wear and tear • Zero resale value, hence no problem of pilferage • High life expectancy • Fire retardant

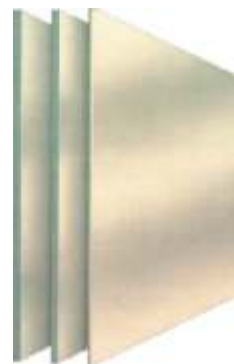


## SMC SHEETS

### RANGE & SPECIFICATIONS:

Size	1 M X 1 M
Standard thicknesses	1.5, 2.5, 4, 6, 9, 12 & 15 mm
Material of construction	Sheet Moulding Compound (SMC)
Custom thicknesses	From 1.5 mm to 15 mm depending on large requirements
Colour-standard	Off-white
Custom	Other colours can be offered against large requirements

**Unique Features:** • Excellent dielectric properties such as volume resistivity, surface resistivity, arc resistance and comparative tracking index • Non-hygroscopic and retain the dielectric properties even in presence of high humidity • Can withstand continuous temperatures up to 140° C • Anti-corrosive and resistant to most acids, alkalies & chemicals • Weatherable and suitable for all kinds of climatic conditions • Self-coloured and maintenance-free • Light weight, strong, stiff and clean



## FRP BATTERY STANDS

Battery Stand is fabricated using FRP sections and polymeric hardware. Designs available in single row or double row and also in single tier or double tier. Dimensions and load bearing members selected to suit the battery. Sintex FRP Battery Stands are available for all types and all makes of battery.

**Unique Features:** • Excellent dielectric strength, hence eliminating leakage of current • No effect against termite & fungus attack • Self coloured • Light weight, yet strong • Easy to clean & wash • No warping • No maintenance costs • Resistant to battery acids



## PULTRUDED SECTIONS

- Angles
  - Rods
  - 'C' Sections
  - Hollow Rectangular Sections
  - 'I' Sections
  - Custom made Sections
  - Approximately 50 Different sizes & shapes available to choose from
- Note: 1. Jobs for custom designed sections can be taken up  
2. Specific resin system can be adopted against bulk requirements.

**Unique Features:** • High strength to weight ratio • Corrosion-proof and suitable for most acids, alkalis & chemicals • Suitable for all types of weather conditions • Self colored and generally do not require painting • Excellent electrical properties such as tracking resistance, high arc resistance and electrical insulation • Poor conductor of heat & sound • Stable in continuous operating in axial direction • Light weight, strong & durable • Can be joined with mechanical fasteners or adhesives





## FRP LADDERS

### RANGE & SPECIFICATIONS:

Introducing for the first time in India, Sintex FRP Ladders can be used for a variety of applications in domestic as well as industrial use. Manufactured as per international OSHA specifications, Sintex FRP Ladders are an optimum combination of safety, elegance and economy.

Range :

Self Support	Wall Support	Extendable
'A' type		
6 ft. (GPFL-060-01)	15 ft. (GPFL-150-WS)	20 ft. (GPFL-200-ES)
5 ft. (GPFL-050-01)	18 ft. (GPFL-180-WS)	40 ft. (GPFL-400-ES)
4 ft. (GPFL-040-01)		
3 ft. (GPFL-030-01)		

**Unique Features :** Shock-proof • Lightweight yet strong • Lightweight • Safe & durable • Compact & easy to carry • Rust-proof & water-proof • Designed for optimum stability as per international OSHA & ANSI standards



## SMC DANGER NOTICE PLATES

### RANGE & SPECIFICATIONS:

Sr. No.	Product Code	Size ( in mm)	Application Height (H) X Width (W)
01	GSSH-2025-1.6	200 X 250	For 11KV and HV installation
02	GSSH-1520-1.6	150 X 200	For 415 V and LV installation

\*Custom sizes also available as per customer requirements

**Unique Features :** • Excellent finish and dimensional consistency • Excellent outdoor weather ability • Rust proof • Withstands coastal and polluted atmosphere • Withstands solar radiation and heavy rains

Maintenance free: Base material SMC does not corrode. Hence, painting remains in place for longer duration • Transparent coating over the printed matter is also weather resistant  
Pilfer proof: Zero resale value in scrap market • No fear of vandalism



## FRP FENCING

### Applications

- Fencing for Electrical Transformers or Substations
- Fencing for Road Divider
- Fencing for Garden/ House
- Staircase fencing

**Unique Features:** • Non Conductive - High Dielectric Capability • High Strength • Non Corrosive Nature • Termite Proof/ Rot Proof • Aesthetic Look • Self Colored • Zero Resale Value - Pilfer Proof • Durable - Long Life • Maintenance Free • Fire Retardant

