

SMC METER BOXES

RANGE & SPECIFICATIONS:

Sr. No.	Product Code	Inside Dimensions (mm) H x W x D	Typical applications
SINGLE HINGED DOOR			
01	GSMB-2520	250 x 200 x 105	L.T. 1 Phase KWh Meter
02	GSMB-2522	250 x 220 x 135	L.T. 1 Phase KWh Meter
03	GSMB-2525	250 x 250 x 155	L.T. 1 Phase KWh Meter
04	GSMB-2835-PC	285 x 230 x 150	1 Ø Meter Box With Transparent Lid
05	GSMB-3428	340 x 285 x 120	L.T. 3 Phase KWh Meter
06	GSMB-3525	350 x 250 x 150	L.T. 3 Phase KWh Meter
07	GSMB-3527	350 x 270 x 200	L.T. 3 Phase KWh Meter
08	GSMB-3726	325 x 220 x 150	L.T. 3 Phase KWh Meter
09	GSMB-3920	390 x 200 x 105	L.T. 3 Phase KWh Meter
10	GSMB-3923	380 x 225 x 140	L.T. 3 Phase KWh Meter
11	GSMB-3727	370 x 270 x 210	L.T. 3 Phase Static KWh Meter
12	GSMB-4030	400 x 300 x 190	L.T. 3 Phase KWh Meter
13	GSMB-4537	450 x 375 x 200	L.T. 3 Phase KWh Meter & Modam
14	GSMB-5345	530 x 450 x 175	Multimeter Box for housing 4 Nos. 1 Phase Meters and 3 Nos. 3 Phase Meters
15	GSMB-5030	500 x 300 x 230	Meter & Modam Box
16	GSMB-5431	540 x 310 x 200	Meter & Modam Box
17	GSMB-3757-1	345 x 480 x 135	1 Phase 2 Meter Box
18	GSMB-3750	345 x 480 x 210	Multimeter Box for housing 3 Nos. 1 Phase Meters
19	GSMB-5728	570 x 280 x 220	H.T. TVM with TTb
20	GSMB-6545	650 x 450 x 150	MultiMeter Box for 4 Nos. 1-Ph & 2 Nos. 3-Ph KWh Meters
21	GSMB-7450	700 x 480 x 210	MultiMeter Box for 6 Nos. 1-Ph & 4 Nos. 3-Ph KWh Meters
22	GSMB-10069	1000 x 690 x 215	MultiMeter Box for Housing 10,12,16 Nos. 1 Phase Meters and 6, 9 Nos. 3 Phase Meters
DOUBLE HINGED DOOR			
23	GSMB-4422	430 x 215 x 150/120	L.T. 1 Phase KWh Meter with MCB and with viewing window for MCB
24	GSMB-4422-I	430 x 215 x 150/120	L.T. 1 Phase KWh Meter with MCB
25	GSMB-5628	505 x 240 x 150	L.T. 3 Phase KWh Meter with MCB and with viewing window for MC
26	GSMB-5628-I	505 x 240 x 150	L.T. 3 Phase KWh Meter with MCB
27	GSMB-5628-II	505 x 240 x 265/150	L.T. 3 Phase Electronic KWh Meter mounted on cast resin bar primary C.
28	GSMB-6535	650 x 350 x 250	L.T. TVM with CT's
29	GSMB-6535-I	650 x 350 x 210	L.T. TVM with CT's
30	GSMB-6535-II	650 x 350 x 255	L.T. TVM with CT's
31	GSMB - 7627	760 x 270 x 170	L.T. TVM with CT's
32	GSMB-8135	815 x 350 x 230	L.T. TVM with CT's
33	GSMB-8535	850 x 350 x 250	L.T. TVM with CT's
34	GSMB-9035	900 x 350 x 250	L.T. KWh/TVM with fuses/CT's/TTB
35	GSMB-9045	900 x 450 x 250	L.T. TVM with CT's
36	GSMB-7450	700 x 480 x 210	MultiMeter Box for Housing 4,6 Nos. 1 Phase Meters and 4 Nos. 3 Phase Meters
37	GSMB-10035	1000 x 350 x 230	L.T. TVM with CT's & Modam
SINGLE DOOR PUSH FIT			
38	GSMB-2520-T	250 x 200 x 105	1 Phase KWh Meter (Electronic) with P.C. Transparent Lid
39	GSMB-2619-T	260 x 190 x 129	1 Phase KWh Meter (Electronic) with P.C. Transparent Lid
40	GSMB-3428	340 x 285 x 120	1 Phase KWh Meter (Electronic)
41	GSMB-3833	384 x 334 x 125	3 Phase Electronic KWh Meter
42	GSMB-3727	370 x 270 x 210	3 Phase Electronic KWh Meter
43	GSMB-3727-1	370 x 270 x 145	3 Phase Electronic KWh Meter

Unique Features: ● Single piece moulded without any joints ● Concealed metal hinges ● Mounting screws fitted from inside ● Metal hardware for wire seal ● Adequate space for meter and cut-outs ● Light weight, yet strong ● Wide range for different applications ● Excellent weatherability ● Safe for consumers ● Prices matching with conventional meter boxes



SMC DISTRIBUTION PILLAR BOXES

RANGE & SPECIFICATIONS:

Standard design made as per electrical requirements to suit conventional power distribution systems consisting of protection devices and metering also as per the clients requirements.

1. Mini pillars
2. 2 way feeder pillar boxes
3. 4 way feeder pillar boxes
4. 6 way feeder pillar boxes
5. 8 way feeder pillar boxes

Above configuration are available with electrical circuitry consisting of Bus bars works and protection devices such as re-wirable kitkats, HRC fuses, 1p / 3p MCCB, Switch disconnector / Switch fuse disconnector etc. to suit the customer requirements.

Note: Other sizes / rating & configurations available on request

Unique Features: • Fabricated by combining SMC & Pultruded FRP sections • Maintenance free, rust proof and shock proof • Withstands coastal / polluted atmosphere, solar radiation and heavy rains • Safe for human as well cattle due to insulated body



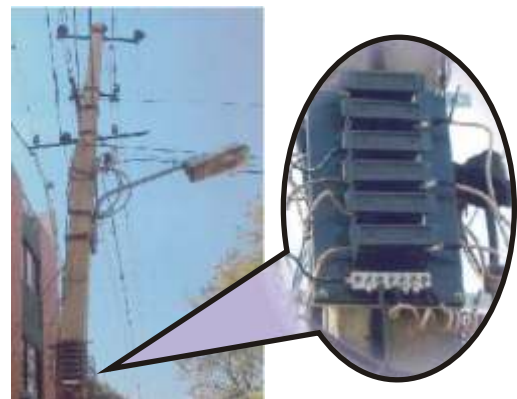
FRP AERIAL FUSE BOARDS

RANGE & SPECIFICATIONS:

Range & Rating of Sintex Aerial Fuse Boards

Fuse Ratings	Product Code	
	3 way	6 way
15 A	GSFB-15A3-01	GSFB-15A6-01
30 A	GSFB-30A3-01	GSFB-30A6-01
60 A	GSFB-60A3-01	GSFB-60A6-01
> 60 A	Please contact us for fuse box	

Unique Features: • FRP base fuse board • Sintex FRP Fuse boards do not shatter • Integrated parts, No detachment • Excellent Di-electric strength, No leakage • Safe, tried & tested method • No decay; Long life



MOULDED SERVICE CONNECTION BOARDS

RANGE & SPECIFICATIONS:

Product Code	Size (mm) H X W	Description	Suitable for installation of
GSBPL-2515	250 X 150	1 Ø Service Connection Board	DP Switch, Lamp Holder, Switch & Fuse
GSBPL-3025	300 X 250	1 Ø Service Connection Board	1 Ø Meter, DP Switch, Lamp Holder, Switch & Fuse
GSBPL-3520	350 X 200	1 Ø Service Connection Board	1Ø Meter, DP Switch, Fuse & Earth Terminal
GSBPL-3030	300 X 300	1 Ø Service Connection Board	1 Ø Meter DP MCB & Earth Terminal
GSBPL-4530	450 X 300	1 Ø Service Connection Board	1 Ø Meter, Lamp Holder, Switch, Earth Terminal, Neutral Link

*Custom sizes also available as per customer requirements

Complete BPL KIT consisting of all the items required for giving BPL connection is also available upon request.

Unique Features: • Excellent outdoor weatherability • Rust proof, water proof and termite proof • Withstands solar radiation and heavy rains • Excellent finish and dimensional consistency • Maintenance free • No decay so no painting or plank replacement required • Consistent quality and timely delivery to match pace of project



SMC DISTRIBUTION BOXES

RANGE & SPECIFICATIONS:

Sr. No.	Product Code	Inside Dimensions (mm) H x W x D	Typical Applications
SINGLE HINGED DOOR			
1.	GSDB-3020	290x195x100	1 Phase Service Connection Distribution Box, Fuse Box
2.	GSDB-3126	270x225x135	Electrical and Hydraulic Instruments, Cutouts, Controls and Switchgear
3.	GSDB-3428	340x285x120	Fuse Box
4.	GSDB-3525	350x250x150	Fuse Box
5.	GSDB-3527	350x270x200	Fuse Box
6.	GSDB-3726	325x220x150	Fuse Box
7.	GSDB-3750	345x480x135	Pole top DB
8.	GSDB-3920	390x200x105	Fuse Box
9.	GSDB-3727	370x270x210	Busbar Chamber Box
10.	GSDB-4030	400x300x190	3 Phase Service Connection Distribution Box / ABC Distribution Box
11.	GSDB-5431	540x310x200	
12.	GSDB-5728	570x280x220	Busbar Chamber box
DOUBLE HINGED DOOR			
13.	GSDB-4422	430x215x150/120	Control Terminal Box, Fuse Box
14.	GSDB-4422-I	430x215x150/120	Control Terminal Box, Fuse Box
15.	GSDB-5628	505x240x150	Busbar Chamber Box
16.	GSDB-5628-I	505x240x150	Busbar Chamber Box
17.	GSDB-5628-II	505x240x265/150	Busbar Chamber Box
18.	GSDB-6050	600x500x250	1 Phase Distribution Box
19.	GSDB-6535	650x350x250	Busbar Chamber Box
20.	GSDB-6535-I	650x350x210	Busbar Chamber Box
21.	GSDB-6535-II	650x350x255	Busbar Chamber Box
22.	GSDB-7450	700x480x210	Electrical Control and Switchgear items such as MCCB, Fuse, Isolator and Busbar Distribution Box
23.	GSDB-10069	1000x690x300	Electrical Control and Switchgear items such as MCCB, Fuse, Isolator and Busbar Distribution Box
24.	GSDB-11569	1150x690x350	Electrical Control and Switchgear items such as MCCB, Fuse, Isolator and Busbar Distribution Box
25.	GSDB-120110	1200x1100x400	With Canopy + Front & Back (Optional) Doors & Pedestal (Optional) TNEB Mini & UGVCL FSP

Unique Features: ● High heat distortion temperature (200°C) as per IS: 10192 ● Fire retardant-Class FV0 as per IS: 11731 Part II or V0 as per UL 94 ● Non-fusing ● Shock-proof & rust-proof ● Rot-proof and termite resistant ● 100% weatherable ● Ideal for indoor and outdoor use ● Elegant appearance



SMC DISTRIBUTION BOARDS(DBs)

RANGE & SPECIFICATIONS:

Sr. No.	Product Code	Inside Dimensions (mm) H x W x D	Applications
01	GS-DB-1510	155x100x60	4-way
02	GS-DB-1816	185x160x60	8-way
03	GS-DB-2818	208x185x60	12-way

Unique Features: ● Special folded construction for preventing ingress of water, insects or dust ● Special folded cover for allowing the hinges to be fitted in such a way that it can't be opened once it is fitted (provision for concealed hinges for total security) ● Moulded plastic extension pieces for fixing onto the wall ● Molded-in louvers for ventilation ● Moulded-in projections for fixing MCB, Switches etc. ● Holes on sides for dissipation of heat



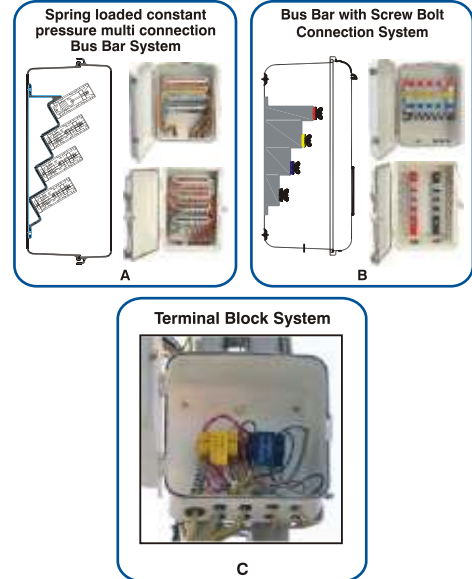
SMC DISTRIBUTION BOARDS(DBs)

RANGE & SPECIFICATIONS:

Sr. No.	Product Code	Approx. Dimension	No. of Service Connection I/C	O/G	No. of Bus Bar Module
(A) SMC Service mains D.B. having Spring Loaded Constant Pressure Multi Connection Bus Bar in SMC Casing					
1	GSSB-3020-406	300 x 200 x 130 mm	1 No. 3 Ph. TPN	5 Nos. TPN	4 Nos. 6 Way
2	GSSB-3020-406 A	300 x 200 x 130 mm	1 No. 1 Ph. SPN	9 Nos. SPN	4 Nos. 6 Way
3	GSSB-4030-210	400 x 300 x 190 mm	1 No. 1 Ph. SPN	9 Nos. SPN	2 Nos. 10 Way
4	GSSB-4030-410	400 x 300 x 190 mm	1 No. 3 Ph. TPN	9 Nos. TPN	4 Nos. 10 Way
5	GSSB-4030-410 A	400 x 300 x 190 mm	1 No. 1 Ph. SPN	17 Nos. SPN	4 Nos. 10 Way
(B) SMC Service mains D.B. having Bus Bar with screw bolt connection through Fly Nut					
1	GSSB-3020-2 BB	300 x 200 x 130 mm	1 No. 1 Ph. SPN	5 Nos. SPN	2 Nos. 6 Way
2	GSSB-3923-BB	380 x 225 x 140 mm	1 No. 1 Ph. SPN	8 Nos. SPN	2 Nos. 9 Way
3	GSSB-3527-2 BB	350 x 270 x 210 mm	1 No. 1 Ph. SPN	8 Nos. SPN	2 Nos. 9 Way
4	GSSB-4030-4 BB	400 x 300 x 190 mm	1 No. 3 Ph. TPN	4 Nos. TPN	4 Nos. 5 Way
5	GSSB-4030-4 BB A	400 x 300 x 190 mm	1 No. 1 Ph. SPN	12 Nos. SPN	4 Nos. 9 Way
6	GSSB-4537-BB	450 x 375 x 200	1 No. 3 Ph. TPN	4 Nos. TPN	4 Nos. 5 Way
(C) SMC Service mains D.B. with clip on type terminal blocks (TB)					
1	GSDB-3020-SP05-FB	300 x 200 x 105 mm	1 No. 1 Ph. SPN	5 Nos. SPN	Link Mounted TB
2	GSDB-4030-TP04-FB	400 x 300 x 190 mm	1 No. 3 Ph. TPN	4 Nos. TPN	Link Mounted TB

* Other sizes of SMC Boxes and items made of thermoplastic material available against specific inquiry.

Unique Features: • Ingress protection to IS: 8623 • Pole mounting arrangement • Bus Bar for high fault currents • Cable entry from bottom and /or sides • Easy and organized management of consumer connections • Shock proof, rust proof, suitable for polluted atmosphere • Very high working temperature and higher arc resistance • Outdoor weatherable and maintenance free



SMC POLE MOUNTED JUNCTION(STREET LIGHT BOXES)

RANGE & SPECIFICATIONS:

Sr. No	Product Code	Inside Dimensions (mm) H x W x D	Typical Applications
Side Hinged - Door fixed to base with hinges			
01	GS-JB-1414	140 x 140 x 95	Junction Box /cut-out box/ Fuse Box for single phase/ 2 Core low wattage FTL/CFL based lighting system for pedestrian/ pathway illumination.
02	GS-JB-2014	200 x 140 x 95	
03	GS-JB-2817	240 x 130 x 110	Pole Mounted Junction Box /cut-out box/ Fuse Box for road /street lighting for 3 phase/4 core high wattage HPSV/HPMV/MH based lighting system for Industrial,
04	GS-JB-2520	250 x 200x 105	
05	GS-JB-3020* (right hinged)	300 x 200 x 105	
Top Hinged - Door fixed to base with hinges on Top			
01	GS-JB-1616-T	140 x 140 x 100	Junction Box /cut-out box/ Fuse Box for single phase/ 2 Core low wattage FTL/CFL based lighting system for pedestrian/ pathway illumination.
02	GS-JB-3016-T	275 x 135 x 110	
Sliding - Door fits to base by means of sliding			
01	GS-JB-3416-S	340x 160 x 90	Pole Mounted Junction Box /cut-out box/ Fuse Box for road /street lighting for 3 phase/4 core high wattage HPSV/HPMV/MH based lighting system for Industrial, commercial as well as flood lighting applications. Provision for fixing 2 cut-outs, one for Lighting and other for Kiosks/ signage/ emergency power supply
Removable - Door fixed to the base by means of hardware			
01	GS-JB-1510-R	155 x 100 x 60	Control terminal box/cut-out box
02	GS-JB-1816-R	185 x 165 x 60	
03	GS-JB-2818-R	280 x 180 x 60	



STARTER PANELS

RANGE

- Mini Dol Starter
- Dol Starter
- Single Phase Starter Panel Box
- Three Phase Starter Panel Box
- Star Delta Starter Panel Box
- Pump Panel House
- Custom Sizes also available

Unique Features: • shock Proof & Rust Proof • Fire Proof • Longer Life & Light Weight • Weather Proof • Maintenance Free



WATER METER BOXES

Unique Advantages

- Avoids meter damage
- Avoids tampering of meter
- Enclosure made of rust proof material
- Viewing window provided for meter reading from outside
- Box sealing provision provided
- Weatherproof
- Maintenance free



Meter boxes available for :
1, 2, 3 & 4 inch meters